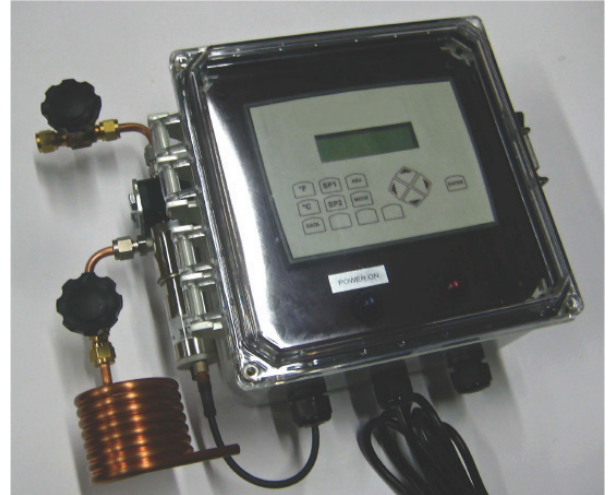




DDP -76/+68 Digital Dewpoint Monitor with High Dewpoint Alarm

Stable and reliable polymer sensors have been used for relative humidity measurement for decades. Their drawback has been they were not accurate in very low dewpoint ranges - Until Now...Atlas Air and Water's DDP -76/+68 Dewpoint Sensor combines the proven characteristics of long term stability and rugged design with a far wider operating range. The operating parameters have been expanded to cover applications where measurement of low moisture content is critical to process operations. This list includes (but is certainly not limited to) industrial and manufacturing processes found in food, metal, paper/wood, pharmaceutical, plastics, oil & gas, petrochem and other markets.

- The AAW DDP -76/+68 Dewpoint Monitor is a high performance, wide range dewpoint monitoring instrument for compressed air and other inert gases.
- It is designed for industrial applications where a rugged, reliable, maintenance-free instrument is required.
- Long term performance is assured due to the sensor's ability to get wet - particularly important in installations that occasionally experience process water spikes due to pipeline condensation, start-up or failure conditions.
- The sensor is immune to non-metallic particulate contamination, oil vapor and most chemicals.
- The DDP -76/+68 has one of the longest calibration intervals available - typically two years.
- The DDP -76/+68 uses a patented auto-calibration procedure to detect measurement inaccuracies and automatically make corrections to the calibration curve. Auto-calibration works while the process is running and usually the user will not even realize it has taken place.
- Easy operation - Simply connect a 1/4" sample line to the inlet connection. The system is complete with integral sample cell and sample valves. Dewpoint can be measured at atmospheric or line pressure.
- Excellent choice for dewpoint demand upgrade or retrofit to older dryers.



DDP -76/+68 Digital Dewpoint Monitor

| | |
|--------------------------------|--|
| Sensor Type: | Thin-film Capacitive Polymer |
| Sensor Pressure Rating: | 700 PSIG |
| System Pressure Rating: | 300 PSIG (std); 700 PSIG (optional) |
| Dew/Frost Point Range: | -60°C to +20°C (-76°F to +68°F) |
| Accuracy: | ±2°C |
| Relay Outputs: | (2) SPST dry; 5a @24VDC/120VAC (configurable HI or LO) |
| Analog Outout: | 4-20ma scaled to -76°F to +68°F |
| Dimensions: | App. 12"H x 13"W x 6"D |

ATLAS AIR & WATER

737 Quentin Avenue South • Lakeland, MN 55043
 Phone: (612)940-9946 • Fax: (651) 490-3450
 sales@atlasairandwater.com • atlasairandwater.com