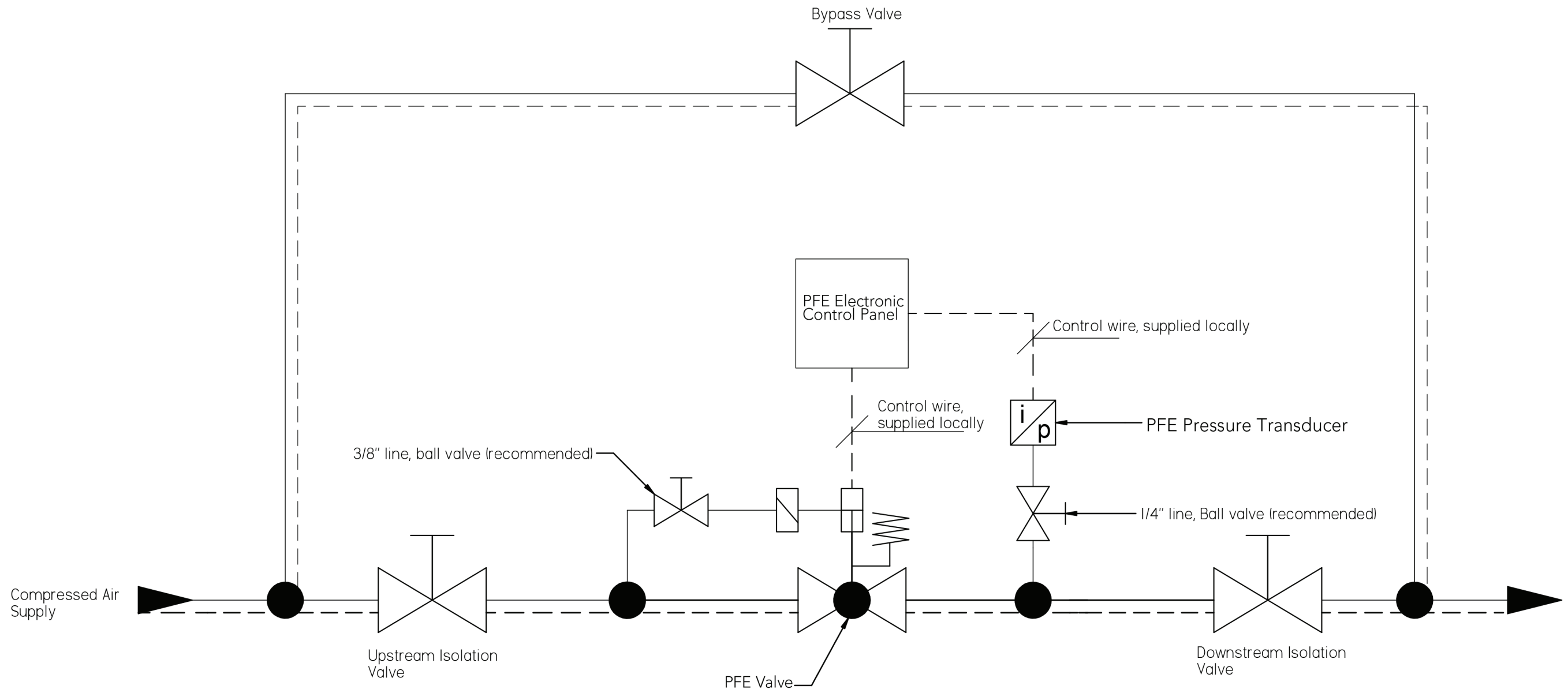


PFE-1.5, 2, 3, 4, 6, 8



- NOTES:
- 1) Dimensions are for reference only.
 - 2) Max Operating Pressure: 250 psig
Operating Pressure range: 85-250
PSIG Set Point Range: 40-225 psig
 - 3) PFE must be properly supported. Follow installation instructions
 - 4) Flow rating based on 110 psig inlet, 100 psig set point (outlet) and 68°F compressed air temperature. Flow rating will vary under different conditions.
 - 5) ASME B16.5 150# Flanges
 - 6) Compressed air supply must be clean, dry air.
 - 7) Bypass recommended but not provided. Bypass installed by others.
 - 8) Style of isolation valve (ball or butterfly) will vary depending on pipe size. Between isolation valves, on both sides of the PFE, a method to "bleed" the air line is required but not shown.

CONFIDENTIAL - This document is the property of Atlas Air & Water, Inc. and is not to be distributed outside the organization.

Note	Position	Modified from	Date	Intr./Appd.
4				

All materials supplied are in compliance with the requirements of the List of Prohibited Substances

Tolerances if not indicated according to:			
+/- 1.0"			
Name	Material	Confidentiality Class per to 1120K	
		Internal	
Treatment	Scale	Family	A1 Compare
	Version Drawn by	Corporate	Blank no. Replaces
	Blank wt.	Kg	First wt. 0 Kg Designation
RELEASED	Des checked.	Prod checked.	Approved Date 11/5/19

S.

G.

JCR